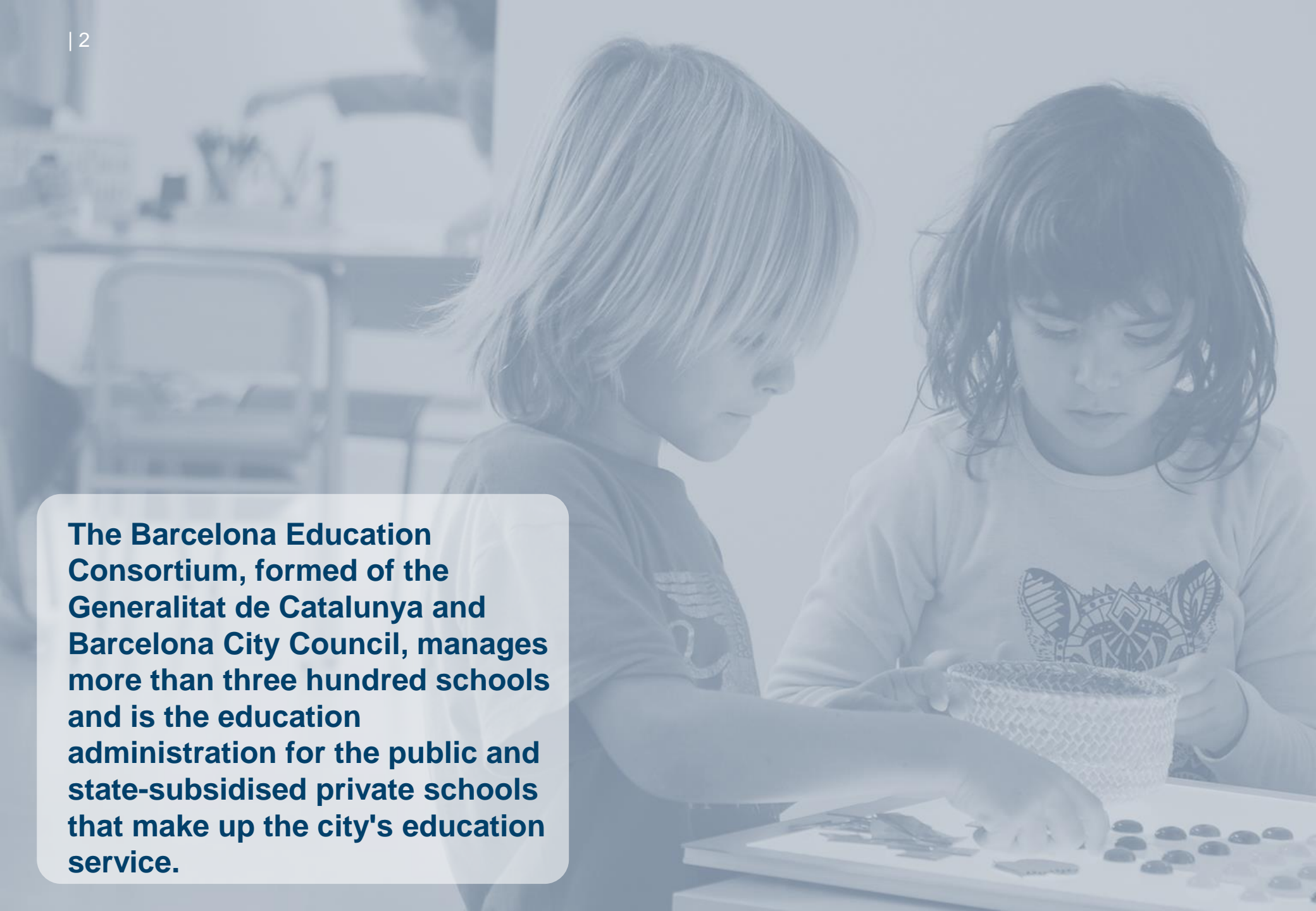


October 2023

# Barcelona Education Consortium

Managing education in the city since 2009.

edubon.cat

A background image showing two young children, a boy and a girl, sitting at a table and working on a craft project. The boy is on the left, leaning over the table, and the girl is on the right, looking down at her work. They are both focused on their task. The image is overlaid with a semi-transparent blue filter. The text is contained within a white rounded rectangle on the left side of the image.

**The Barcelona Education Consortium, formed of the Generalitat de Catalunya and Barcelona City Council, manages more than three hundred schools and is the education administration for the public and state-subsidised private schools that make up the city's education service.**

## In education, everyone is necessary And when we work as a team, success is multiplied.

We were created in 2009 as a management tool to bring people together. To bring together the experience, enthusiasm, drive and know-how of all the city's stakeholders in education: families, students, teachers and education professionals, social agents, municipal services, city facilities, and so on.



**We join forces** to create a single education administration that ensures **integrated and shared management**.

2 joint administrations

€252 million - Own budget

€1.227 billion - Managed budget



We align positions to promote the city's **Education Service** and tackle **challenges collectively**.

308 public schools

204 state-subsidised private schools

12,366 professionals in the public network

600 professionals providing services to schools

10 education services in the territory



We are committed to **systemic educational management and improvement** based on rigour, knowledge, expertise and proximity.

28 new schools (2009-2023)

98% of families enrol at a local school they selected

100% public schools in educational innovation

100% SEN students identified: schooling adapted to their needs (SEN A) and balanced (SEN B)

86% 16-18 year olds continue in education

## Index

**2 The Education Consortium in 1 minute**

**5 What is the Barcelona Education Consortium?**

**9 What drives education in Barcelona?**

- 10 We have one purpose
- 12 Vision and values
- 14 10 key processes
- 15 7 strategic areas

**19 Organisational chart, figures**

- 20 Board of Directors
- 21 Organisational chart
- 22 Budget
- 23 Education team
- 24 Schools
- 25 General students
- 26 SEN A students
- 27 SEN B students

# What is the Barcelona Education Consortium?

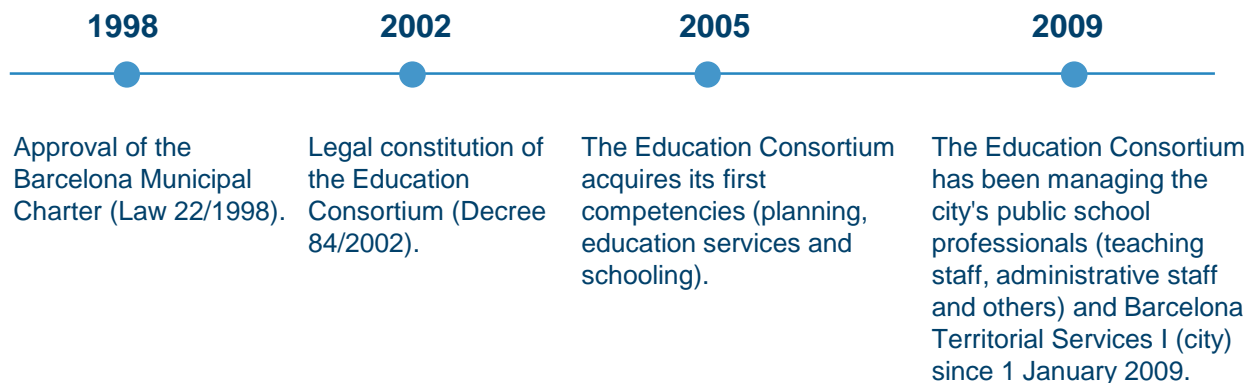


## What is the Barcelona Education Consortium?

The Barcelona Education Consortium is an **instrument for joint management, decentralisation and collaboration**, which is borne of the recognition of Barcelona's specific needs as a capital city.

So, it represents the aim of the Generalitat de Catalunya and Barcelona City Council to work together to improve services in schools and for citizens through a single education network for Barcelona.

### 4 key dates



### What do we gain with a consortium?



The combined forces to create a **single education network** and integrated management with a **citywide perspective**.



**Systemic, rigorous and coherent education management**, based on data, knowledge and expertise.



**Proximity, autonomy and mainstreaming** in decision-making and generating conditions.



**Aligning positions** to move forward and collectively address shared challenges.

## What does a single education network mean?



Integrated and local management that **guarantees equal opportunities for all students.**

**308**

Public schools

- **244** compulsory education centres
- **76** post-compulsory education centres

**204**

State-subsidised private schools

**195**

Private schools

**136,814**

students in the public school network

- **4%** students identified as SEN A (compulsory education)
- **19.2%** students identified as SEN B (compulsory education)

**119,319**

Students in state-subsidised private schools

**9,871**

students in private schools



An **organisation at the service of schools** and education professionals.

**11,822**

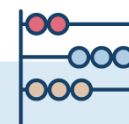
professionals in public schools

**22,324**

education professionals in the whole of the public system

**600**

professionals in central services and education services



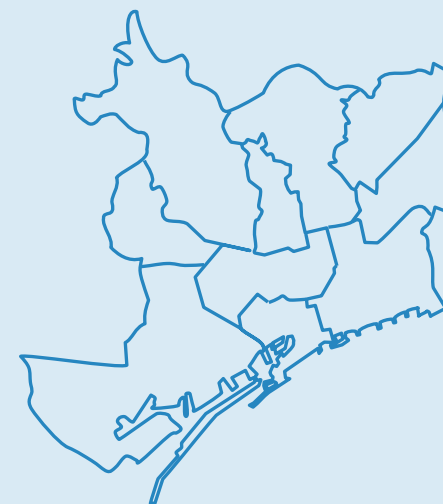
**Efficient, prioritised and localised management** of the needs of the territory.

**€252 million**

Own budget

**€1.227 billion**

Managed budget





## An education administration for one **single** education network

In light of Barcelona's complex and diverse educational reality, **the consortium brings autonomy, agility, proximity, mainstreaming and an organisation based around and geared towards management.**

The challenges and programmes are tackled from all areas (educational initiatives, planning, facilities, inclusive education, etc.), with a citywide perspective and open and rigorous management based on data, processes, knowledge of the situation on the ground, and listening to the education community and getting them involved in the different work and governance spaces (networks, programmes, boards, and so on).



# What drives education in Barcelona?



## What drives education in Barcelona?

The Barcelona Education Consortium was created with the Barcelona Municipal Charter and was given **10 key functions or processes** to ensure coherent management of education, involving the city's entire education community.

On the basis of this remit, the Education Consortium currently works on **7 strategic areas** which are focused on and consolidated, linking them to each other and to our purpose: **to manage educational opportunities for children and young people in Barcelona in a way that is systemic, excellent and transformative.**



## We have one purpose: to join forces and manage the education service



The purpose we share with all the city's education stakeholders is a **commitment to ensuring that everyone finds a pathway to opportunities and personal development through education, and a collective project that empowers us as citizens and drives us as a city.**

The Barcelona Education Consortium is tasked with bringing together the **collective intelligence** of those who work in education in the city, to ensure the systemic management of education at the service of educational excellence and quality,

and to guarantee opportunities so that **children, young people and adults can build their own personal pathway**, thereby contributing decisively to creating a **skilled, capable citizenry.**



## Vision and values: what inspires us?



### Education 2030: the horizon we're working towards

The educational map in Barcelona today is very different from the one the Education Consortium received in 2009. The various initiatives that have been launched in recent years have aimed to improve education by bringing about the systemic transformations needed at all levels from pre-school education to post-compulsory education. **A systemic change by everyone, for everyone and in all areas** (from the classroom to the city) to prepare and equip generations of children and young people for a fairer city and world, with more sustainable development and for a global, empowered and open citizenry.

**Education 2030** is what inspires us to deliver transformation and promote an education ...

✓ to learn to **understand**,  
and understand to **transform**

✓ for **everyone**

✓ which creates **personalised and  
unique learning opportunities**  
together with students at the school

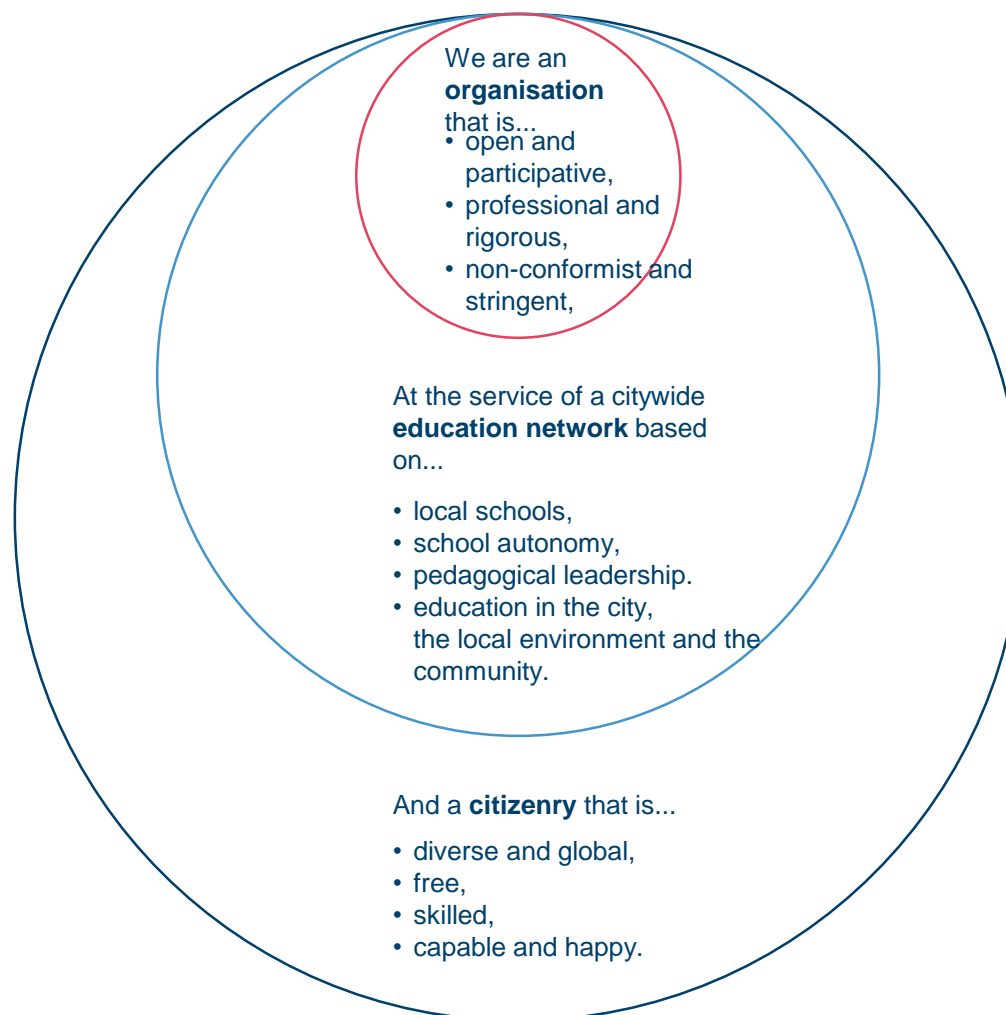
✓ and where every young  
person can **get the skills  
they need to prepare for  
professional life.**

“ We are working towards the 2030 horizon set by UN sustainable development goal (SDG) number 4: “Ensure **inclusive and equitable quality education and promote lifelong learning opportunities** for today's children and young people so they are able to tackle and **transform** the local and global challenges of the future”.



## Values for a shared purpose

With the aim of joining forces and managing the education system, we work in accordance with a set of principles as an organisation, in relation to schools and in relation to people and the education community in general.



A diagram showing a graph on the left, which is a cluster of nodes connected by edges. An arrow points from the graph to a large stylized letter 'e' on the right. Above the arrow are several overlapping, wavy lines in red, orange, and blue, representing the transformation or embedding process from the graph structure to the embedding space.

## 10 key processes

- 
- ```
graph TD; 1 --- 2; 2 --- 3; 3 --- 4; 4 --- 5; 5 --- 6; 6 --- 7; 7 --- 8; 8 --- 9; 9 --- 10; 10 --- 1; 4 --- 1; 4 --- 2; 4 --- 3; 4 --- 6; 4 --- 7; 6 --- 9; 7 --- 10;
```

## 7 strategic areas | main work lines



### How are we improving education in Barcelona?

Equivalence  
between schools

Educational equity

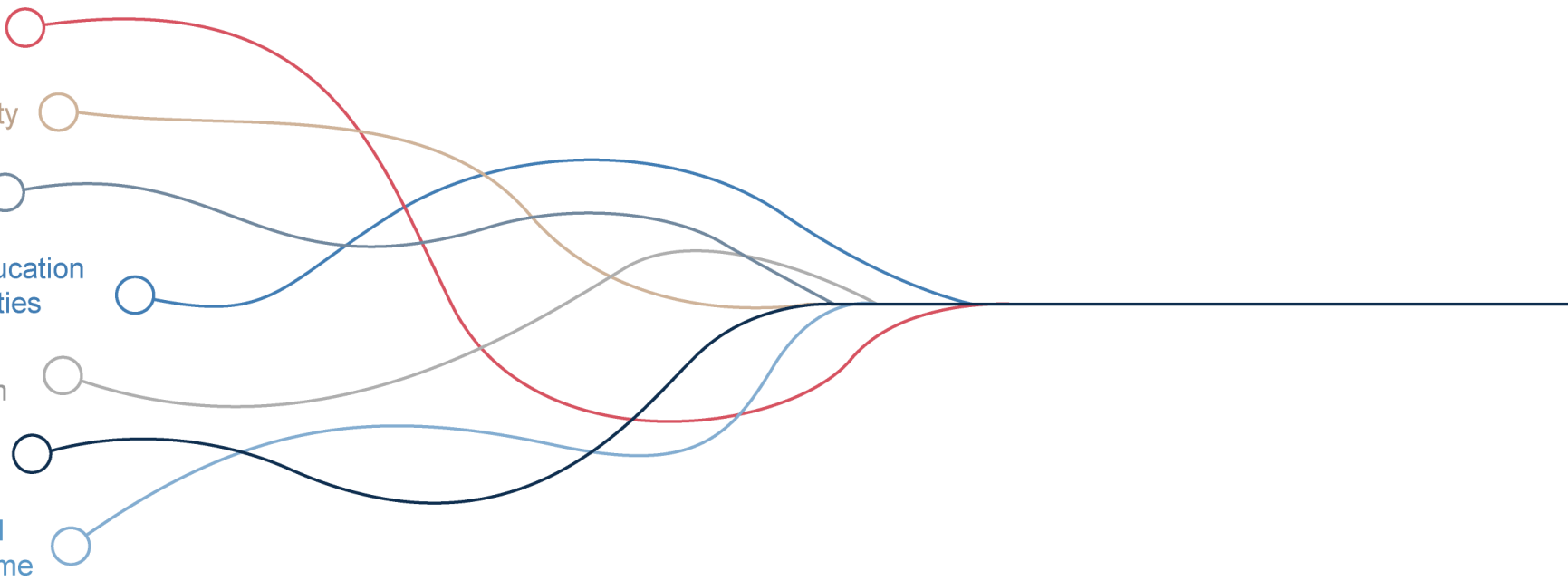
Pedagogical  
improvements

The model of education  
spaces and facilities

An inclusive  
education system

Continuing  
education 16-18

New professional  
training programme





## 7 strategic areas for the systemic management of education



### Equivalence between schools

A diverse network of schools that offer a good quality education wherever you go is an equivalent network. We work to ensure equal educational opportunities and to ensure families have confidence in their local school.

### The model of education spaces and facilities

We believe in architecture with an educational purpose. The challenge is to deliver this with scalable measures in all the city's 300 public schools.

### Continuing education 16-18

Following the compulsory education stage, no one should be left behind, because this is a key moment for ensuring every young person is ready for the transition to adult and professional life.

### Educational equity

We tackle inequalities so that, as a society, we all gain. We don't want anyone to be left behind, whatever their personal or family situation.

### An inclusive education system

A fully inclusive education system means tailored learning is possible both in mainstream schools and special education centres. In Barcelona we guarantee this framework of educational support and responses adapted to the diverse needs of our students.

### New professional training programme

Now is the time for vocational training to be seen as a valuable pathway on a par with university education and as a strategic factor for the social and economic competitiveness of Barcelona.

### Pedagogical improvements

We promote the transformation of education in all public schools so there is also equivalence in the pedagogical approaches of every school in the city.

## 7 strategic areas for the systemic management of education



### Equivalence between schools



A diverse network of schools that offer a good quality education wherever you go is an equivalent network

**We intervene with a systemic school by school approach:** in the education facilities and spaces (maintenance, reforms and improvements, new facilities), in the project and teaching team (training, work spaces and networks), in the composition and diversity of the students (identifying and placing vulnerable students in schools throughout the network, support measures), in the schooling process (reserving places, supporting families) and so on.

It is due to this global and cross-cutting approach that we are able to guarantee equivalent conditions in all schools or, to put it another way, **real equal educational opportunities wherever you live.** Because of this, families can feel confident and see that their local school is as good as all the rest.

### Educational equity



When we tackle inequalities, we all gain as a society.

**We don't want anyone to be left behind, whatever their personal or family situation.** Educational success also depends on helping students address their material, emotional and personal circumstances.

And we do so with measures such as subsidised school meals and tackling segregation, **ensuring free schooling is available to everyone who needs it and working to ensure balanced schooling,** across all schools, for children with special educational needs.

Because educational progress improves when we grow in diverse, balanced groups, in accordance with the real circumstances of each neighbourhood.

### An inclusive education system



Because we believe in a system that can be tailored to the learning needs of every student.

A fully inclusive education system means tailored learning is possible both in mainstream schools and special education centres.

In Barcelona, we guarantee this framework of educational support and responses that are adapted to the diversity of students, particularly those with special personal circumstances or specific educational needs.

For this reason, **it is essential to identify the specific needs of students before they enter the education system so we can act in a preventative manner, support the family with schooling and perform tailored monitoring.**

## 7 strategic areas for the systemic management of education



### Pedagogical improvements



Systemic improvement and pedagogical leadership have to be embedded throughout the education network.

We promote the transformation of education in all public schools so there is also equivalence - that is, quality education - in the pedagogical approaches of every school in the city.

The programmes “Networks for change and tools for change”, the unified call for programmes, the mentoring and training, have provided professionals the tools and resources they need to empower themselves and bring about innovation at a systemic level.

And systemic means **that no school, no professional and no student is left out of continuous educational improvement processes.**

### The model of education spaces and facilities



We have a model of education spaces based on an architecture designed for education.

We have a model and the challenge is to deploy this with scalable measures in all the city's 300 public schools.

The 7x2 maintenance model for schools, the painting and cladding programme, the energy saving plan, the furniture renovation programmes or the planning and prioritising of REI interventions (reforms, extensions and improvements) are work lines within the education facility model that we promote throughout the education network, seeking **solutions and prioritisation systems with a systemic approach and with a view to ensuring equivalence both for newly built facilities and the stock of pre-existing buildings.**

## 7 strategic areas for the systemic management of education



### Continuing education 16-18



At the end of compulsory education, no one should be left behind.

We focus on continuity, ensuring students move into **post-compulsory education, because this is the time to prepare for the transition to adult and professional life.**

For this reason, it is essential to prevent early drop-out of education, and we do this by offering educational guidance during the secondary school stage and with new proposals for more vocational skills-based baccalaureate subjects (sports baccalaureates, vocational baccalaureates..) and increasing the offer of vocational training programmes.

These measures seek to make **training options more flexible and adapted to the needs and realities of young people aged 16 and above.**

### New professional training programme

Be  
Pro

A new reorganised offer for productive sectors and specialist centres.

**Now is the time for vocational training to be seen as a valuable pathway on a par with university education** and as a strategic factor for the social and economic competitiveness of Barcelona.

Be\_Pro is a commitment to launching a new professional training programme with the participation of the productive sectors to tailor it to current and future challenges and demands.

This new training programme comes with a new map that reorganises the offer of the 33 vocational training centres in Barcelona into 11 areas and with 10 specialised centres so that by 2030 all centres will offer specialist training in one or two productive sectors.

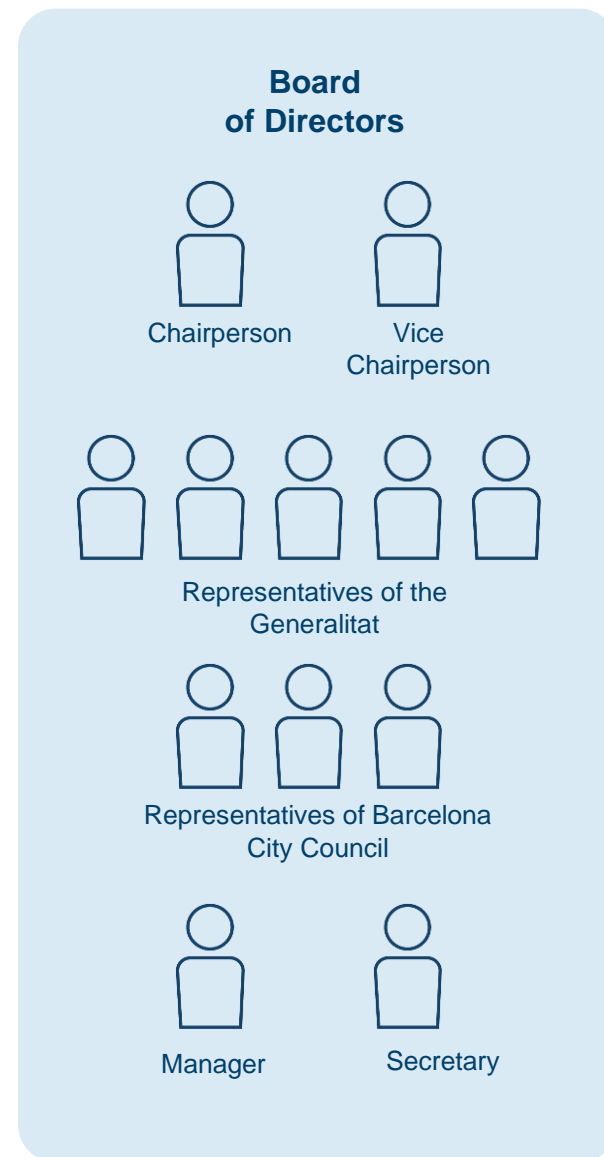
# Organisation, key figures and educational maps of the city



## Board of Directors

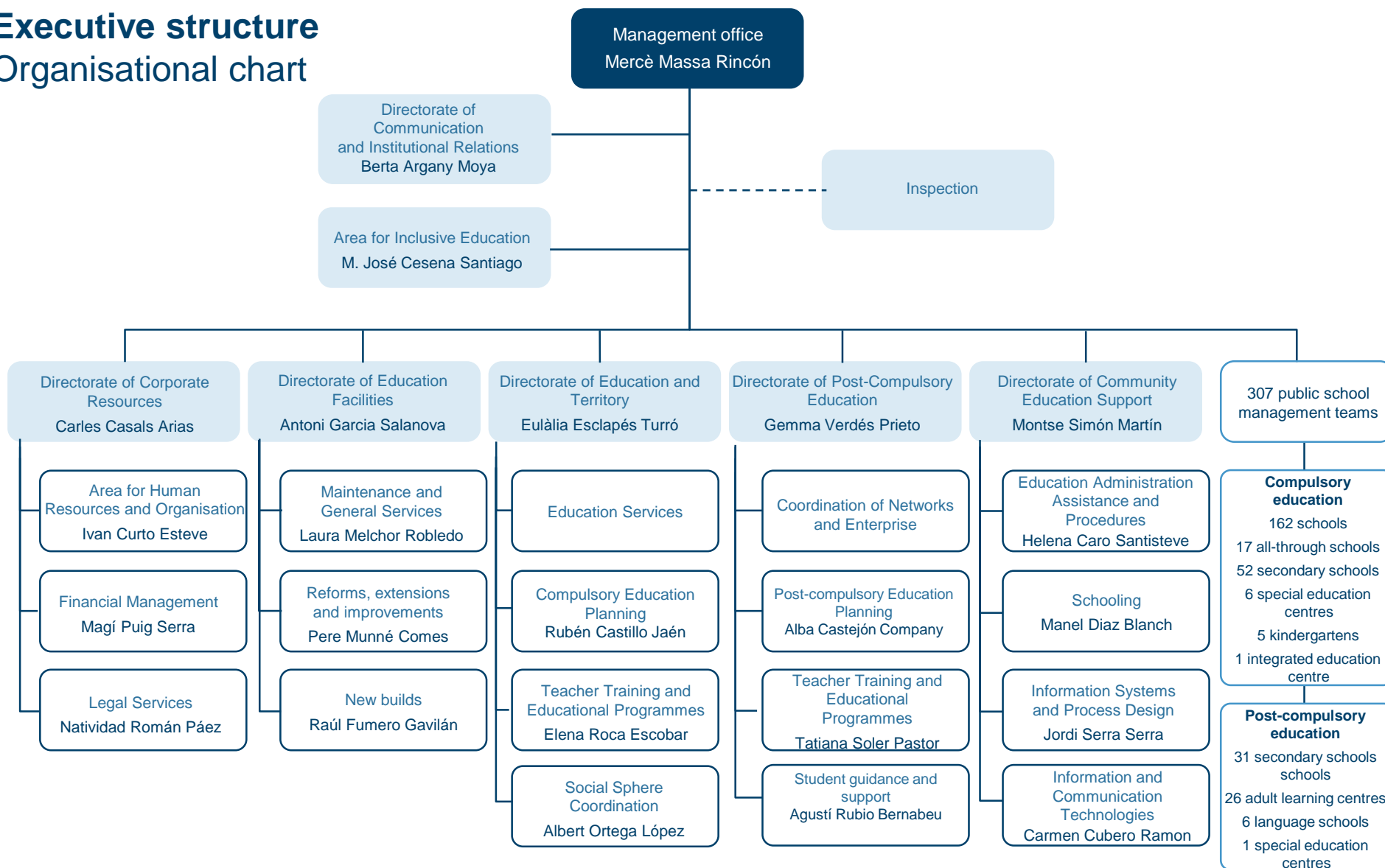
### Highest governing body of the Consortium

- **The Chairperson** appoints the regional education minister.
- **The Vice Chairperson** is appointed by the mayor or mayoress of Barcelona
- Five **representatives of the Generalitat**.
- Three **representatives of Barcelona City Council**.
- **The manager** of the Consortium, with voice but no vote.
- **A secretary** of the Board of Directors



## Executive structure

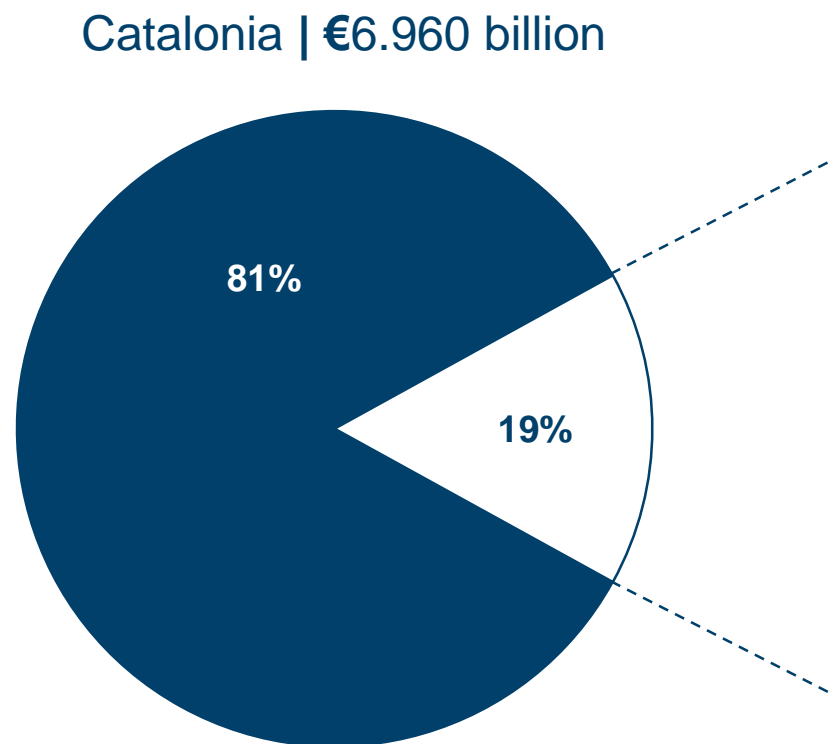
### Organisational chart





## Barcelona Education Consortium budget

Public expenditure on non-university education in Catalonia and Barcelona in 2023

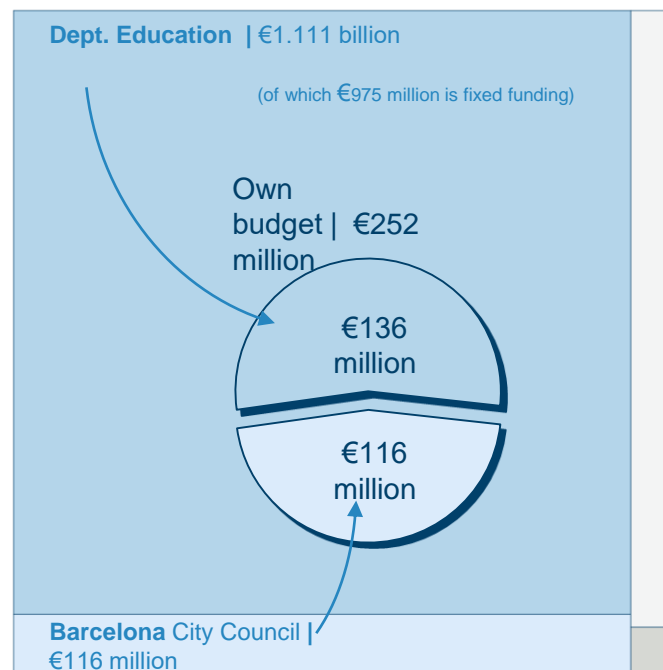


### Barcelona | €1.329 billion

Management through the Education Consortium | €1.227 billion

Direct Expenditure | €102.5 million

Barcelona City Council | €94.8 million



Dept. Education | €7.7 million

## Education team

### Year 2022-2023

| Schools                          | Total         | Department    | City Council | Consortium |
|----------------------------------|---------------|---------------|--------------|------------|
| Teaching staff                   | 10,182        | 10,146        | 36           |            |
| Teaching support                 | 378           | 320           | 58           |            |
| Kindergarten educators           | 34            | 34            |              |            |
| Administrative and service staff | 842           | 521           | 321          |            |
| <b>Total</b>                     | <b>11,436</b> | <b>11,021</b> | <b>415</b>   | <b>0</b>   |

#### Education Services and central services

|                                                     |            |            |           |            |
|-----------------------------------------------------|------------|------------|-----------|------------|
| Teaching staff education services                   | 347        | 313        | 34        |            |
| Education <b>services</b> teaching support          | 4          |            | 4         |            |
| Education services administrative and service staff | 27         |            | 27        |            |
| Inspection                                          | 42         | 42         |           |            |
| Central services technical and teaching staff       | 42         |            |           | 42         |
| Central services administrative and service staff   | 138        |            |           | 138        |
| <b>Total</b>                                        | <b>600</b> | <b>355</b> | <b>65</b> | <b>180</b> |

420 education  
services staff and  
180 central services  
staff

|                    |               |               |            |            |
|--------------------|---------------|---------------|------------|------------|
| <b>Total staff</b> | <b>12,036</b> | <b>11,376</b> | <b>480</b> | <b>180</b> |
|--------------------|---------------|---------------|------------|------------|

## Schools 2023-2024

### Managed by the Consortium

| By structure                                                         | Public     | State-subsidised private | Private    | Total      | Weight within Catalonia |
|----------------------------------------------------------------------|------------|--------------------------|------------|------------|-------------------------|
| <b>Pre-school education (0-3)</b>                                    | 5*         | 0                        | 128        | <b>133</b> | <b>9%</b>               |
| <b>Pre-school and primary education</b>                              | 162        | 23                       | 2          | <b>187</b> | <b>8%</b>               |
| <b>Primary and secondary education</b>                               | 17         | 123                      | 5          | <b>145</b> | <b>23%</b>              |
| <b>Secondary and post-compulsory education</b>                       | 83         | 27                       | 51         | <b>161</b> | <b>19%</b>              |
| Compulsory secondary education                                       | 5          | 1                        | 0          | 6          | 9%                      |
| Compulsory secondary education + baccalaureate                       | 47         | 1                        | 1          | 49         | 18%                     |
| Compulsory secondary education + baccalaureate + vocational training | 9          | 4                        | 0          | 13         | 5%                      |
| Compulsory secondary education + vocational training                 | 0          | 2                        | 0          | 2          | 15%                     |
| Baccalaureate                                                        | 0          | 1                        | 4          | 5          | 100%                    |
| Baccalaureate + vocational training                                  | 2          | 8                        | 1          | 11         | 50%                     |
| Vocational training                                                  | 16         | 10                       | 45         | 71         | 41%                     |
| Arts and music education                                             | 4          | 0                        | 0          | 4          | 17%                     |
| <b>Integrated music and dance education</b>                          | 1          | 0                        | 0          | <b>1</b>   |                         |
| <b>Special education</b>                                             | 7          | 26                       | 0          | <b>33</b>  | <b>33%</b>              |
| <b>Adults</b>                                                        | 26         | 0                        | 9          | <b>35</b>  | <b>14%</b>              |
| <b>Languages</b>                                                     | 6          | 0                        | 0          | <b>6</b>   | <b>13%</b>              |
| <b>Total general</b>                                                 | <b>307</b> | <b>199</b>               | <b>195</b> | <b>701</b> |                         |

\*Kindergarten (department)

For the coming academic year 2023/2024, the Consortium will manage the **public schools**:

**238**  
Compulsory  
education  
centres

**64**  
Post-compulsory  
education  
centres

## Students 2022-2023

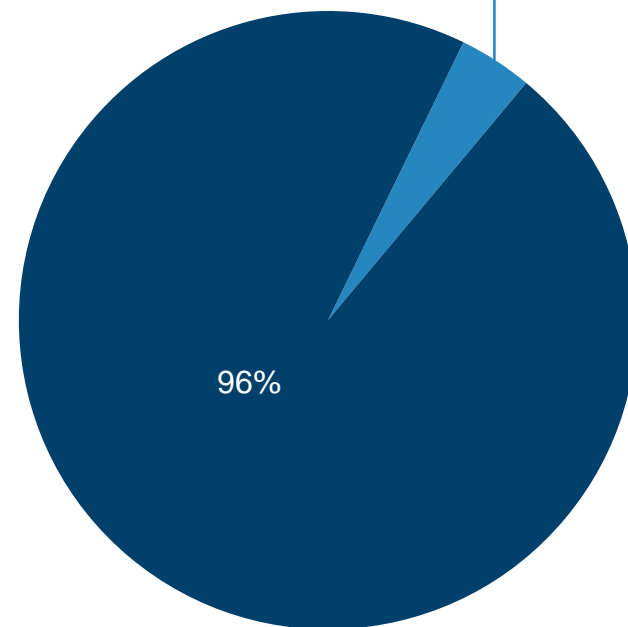
|                                                      | Public schools | State-subsidised private schools | Private schools | Total          | Weight within Catalonia |
|------------------------------------------------------|----------------|----------------------------------|-----------------|----------------|-------------------------|
| <b>Nursery schools and kindergartens (0-3 years)</b> | <b>8,802</b>   |                                  | <b>5,035</b>    | <b>13,837</b>  | <b>22%</b>              |
| Pre-school and primary education (3-12 years)        | 56,567         | 57,565                           | 1,765           | <b>115,897</b> | 22%                     |
| Compulsory secondary education (12-16 years)         | 22,532         | 34,427                           | 1,115           | <b>58,074</b>  | 20%                     |
| Special education                                    | 1,526          | 382                              | -               | <b>1,908</b>   | 34%                     |
| <b>Total basic education (3-16 years)</b>            | <b>80,625</b>  | <b>92,374</b>                    | <b>2,880</b>    | <b>175,879</b> | <b>21%</b>              |
| <b>Baccalaureate</b>                                 | <b>9,139</b>   | <b>5,916</b>                     | <b>8,749</b>    | <b>23,804</b>  | <b>31%</b>              |
| Basic level training cycles                          | 115            | -                                | -               | <b>115</b>     | 13%                     |
| Intermediate level vocational training               | 8,193          | 5,221                            | 3,023           | <b>16,437</b>  | 26%                     |
| Higher level vocational training                     | 13,023         | 6,555                            | 7,522           | <b>27,100</b>  | 39%                     |
| Initial vocational training (PFI)                    | 786            | -                                | 686             | <b>1,472</b>   | 20%                     |
| <b>Vocational training</b>                           | <b>22,117</b>  | <b>11,776</b>                    | <b>11,231</b>   | <b>45,124</b>  | <b>20%</b>              |
| <b>Language teaching</b>                             | <b>13,897</b>  |                                  |                 | <b>13,897</b>  | <b>33%</b>              |
| <b>Adult education</b>                               | <b>10,590</b>  |                                  | <b>481</b>      | <b>11,071</b>  | <b>18%</b>              |
| <b>Total education</b>                               | <b>145,170</b> | <b>110,066</b>                   | <b>28,376</b>   | <b>283,612</b> | <b>24%</b>              |

Figures for students in general education are for the academic year 2022-2023 (RALC 13/01/23), and those for other types of education are for 2021-2022 (Information System of Indicators and Statistics of the Department of Education)

## SEN A students in compulsory education in the city of Barcelona | Academic year 2023-2024

|                           | Total students | SEN A students | % SEN A students |
|---------------------------|----------------|----------------|------------------|
| Mainstream schools        | 168,996        | 5,143          | 3.0%             |
| Special education centres | 1,704          | 1,704          | 100%             |
| <b>Total</b>              | <b>170,700</b> | <b>6,847</b>   | <b>4.0%</b>      |

Students identified as SEN A represent **4.0%** of all students in compulsory education



■ Alumnat NEE A ■ Resta d'alumnat

# SEN B students in compulsory education |

## Academic year 2023-2024

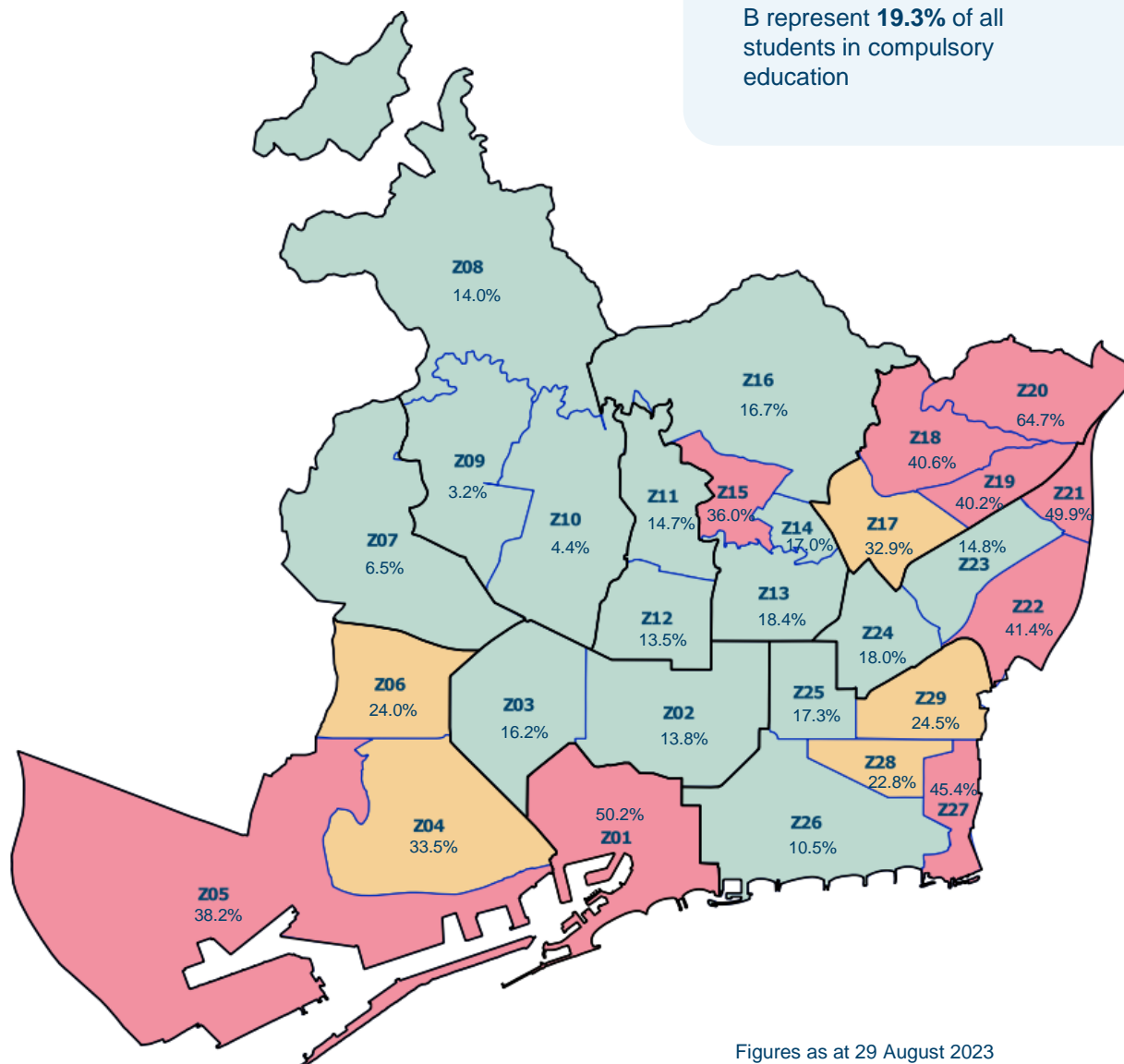
Students identified as SEN B represent **19.3%** of all students in compulsory education

### EDUCATION AREAS

- Z01 Ciutat Vella
- Z02 l'Eixample-Dreta
- Z03 l'Eixample-Esquerra
- Z04 el Poble-sec - la Font de la Guatlla
- Z05 la Marina del Prat Vermell - la Marina de Port
- Z06 Sants Hostafrancs - la Bordeta - Badal
- Z07 Les Corts
- Z08 Vallvidrera, el Tibidabo i les Planes
- Z09 Sarrià - les Tres Torres
- Z10 el Putxet i el Farró - Sant Gervasi - Galvany
- Z11 la Salut - Vallcarca i els Penitents - el Coll
- Z12 la Vila de Gràcia - el Camp d'en Grassot i Gràcia Nova
- Z13 el Baix Guinardó - Can Baró - el Guinardó
- Z14 La Font d'en Fargues
- Z15 el Carmel - la Teixonera
- Z16 St Genís dels Agudells - Montbau - la Vall d'Hebron - la Clota - Horta
- Z17 Porta - el Turó de la Peira - Vilapicina i la Torre Llobeta - Can Peguera
- Z18 la Guineueta - Canyelles - les Roquetes - Verdun
- Z19 la Prosperitat - la Trinitat Nova
- Z20 Torre Baró - Vallbona - Ciutat Meridiana
- Z21 la Trinitat Vella
- Z22 Baró de Viver - el Bon Pastor
- Z23 Sant Andreu
- Z24 Navas - la Sagrera - el Congrés i els Indians
- Z25 el Camp de l'Arpa del Clot - el Clot
- Z26 Poblenou, el Parc i la Llacuna, Vila Olímpica, Diagonal Mar i Front Marítim
- Z27 el Besòs i el Maresme
- Z28 Provençals del Poblenou
- Z29 la Verneda i la Pau - Sant Martí de Provençals

### KEY

- High complexity (above 35% vulnerability)
- Medium complexity (between 20% and 35% vulnerability)
- Standard (below 20% vulnerability)



Figures as at 29 August 2023

# Many thanks